

06-5048
 Hospital
 Administrator
 R24 CL
 Anchorage

06-5012
 Blding Maint Supr.
 R20 CL
 Anchorage

Building Maintenance Environmental Services Central Services Parts & Supply

06-5024
 Maint Spec BFC
 Jmy II Lead
 R51 CL
 Anchorage

Rogelio Isaguirre
 Env.Svcs Lead
 06-5214 R58 CL
 Anchorage

06-0482
 Supply Tech II
 R12 CL
 Anchorage

06-2308
 Maint Gen
 Sub Jmy I
 R58 CL
 Anchorage

06-5035
 Maint Gen Jmy
 R54 CL
 Anchorage

06-5167
 Env Svcs Jmy II
 R60 CL
 Anchorage

06-5168
 Env Svcs Jmy II
 R60 CL
 Anchorage

06-5202
 Env Svcs Jmy II
 R60 CL
 Anchorage

06-5203
 Env Svcs Jmy I
 R61 CL
 Anchorage

06-5093
 Stock & Parts Svcs
 Sub Jmy
 R57 CL
 Anchorage

06-5041
 Maint Spec BFC
 Jmy I
 R53 CL
 Anchorage

06-5047
 Maint Spec
 Plumber Jmy II
 R51 CL
 Anchorage

06-5204
 Env Svcs Jmy I
 R61 CL
 Anchorage

06-5206
 Env Svcs Jmy I
 R61 CL
 Anchorage

06-5215
 Env Svcs Jmy II
 R60 CL
 Anchorage

06-5216
 Env Svcs Jmy I
 R61 CL
 Anchorage

06-5259
 Office Assistant II
 R10 CL
 Anchorage

06-5064
 Maint Gen Sub
 Jmy II
 R56 CL
 Anchorage

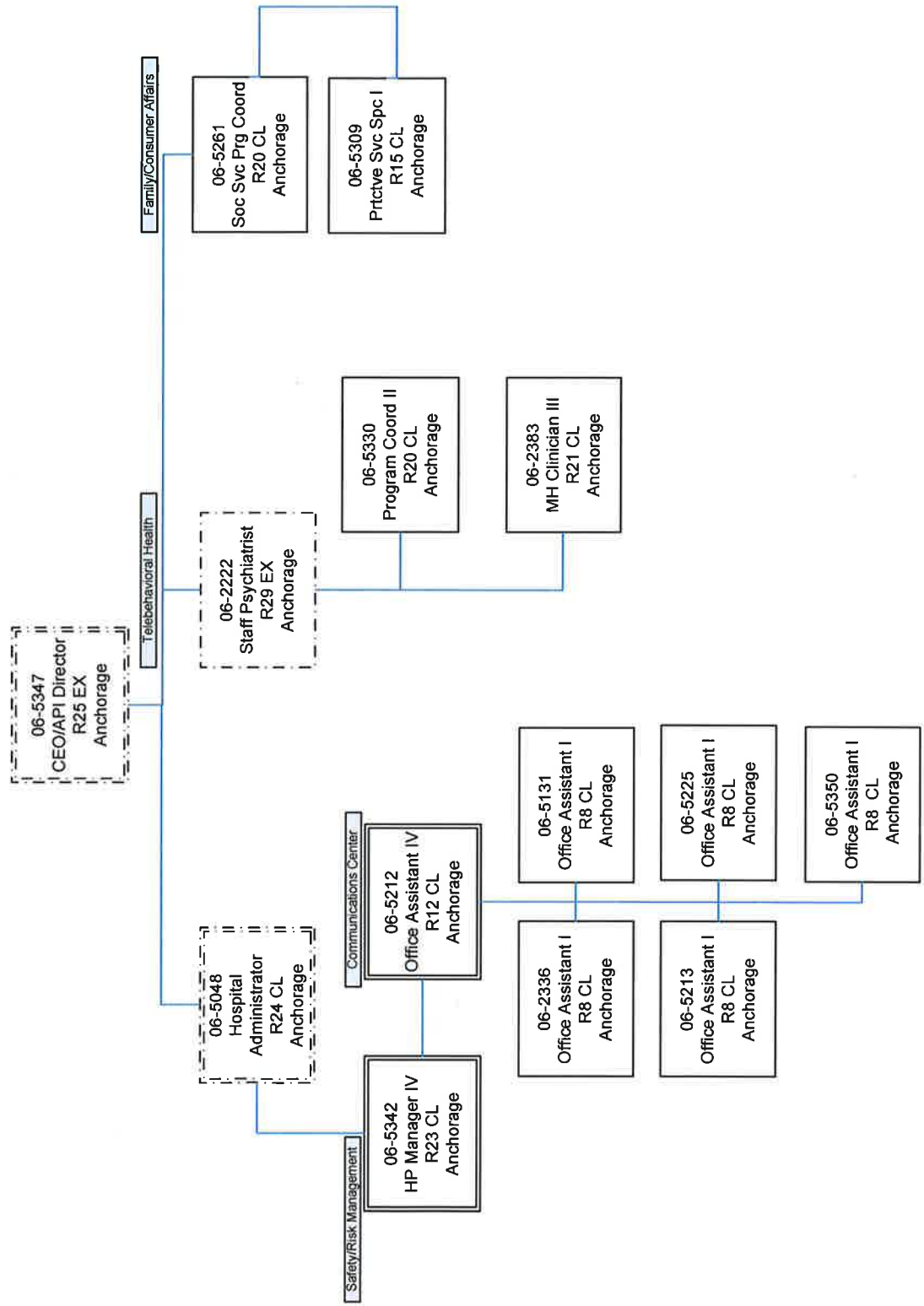
06-5312
 Maint Spec BFC
 Jmy I
 R53 CL
 Anchorage

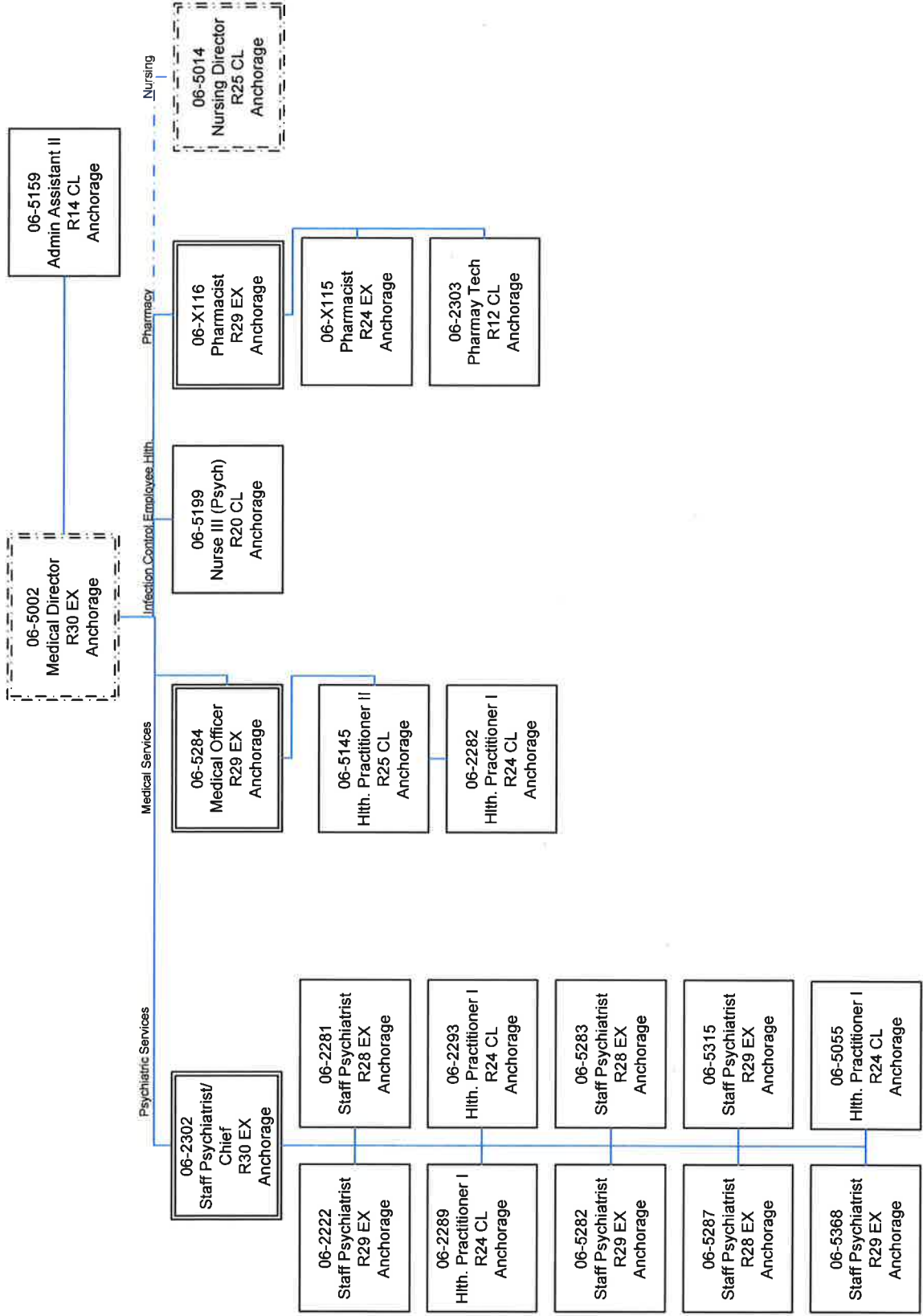
06-5217
 Env Svcs Jmy II
 R60 CL
 Anchorage

06-5222
 Env Svcs Jmy I
 R61 CL
 Anchorage

06-5363
 Env Svcs Jmy II
 R60 CL
 Anchorage

06-5364
 Env Svcs Jmy II
 R60 CL
 Anchorage

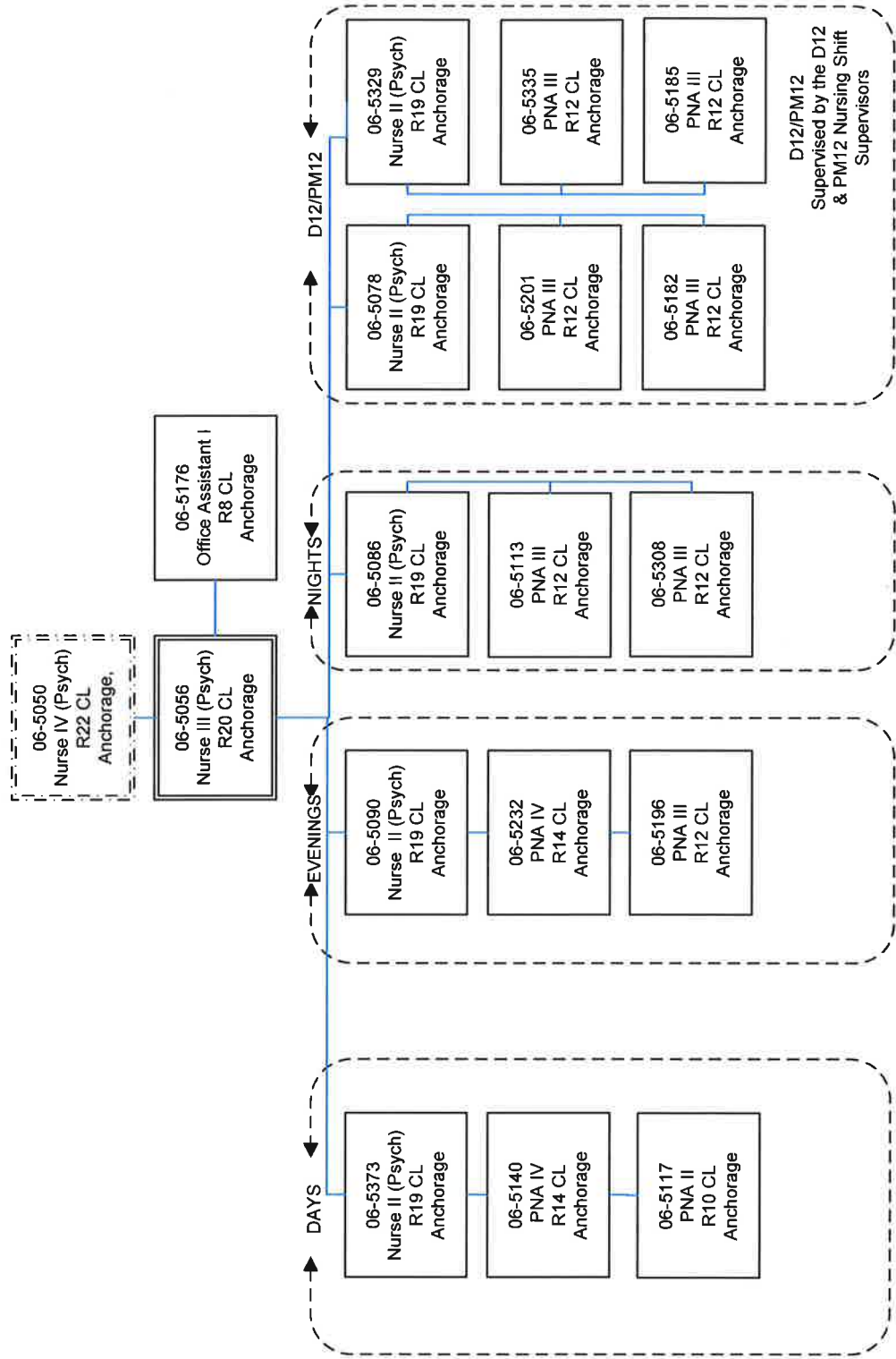




Core Floor Staffing Levels for RN / PNA:

Day	Evening	Night	Weekend Day/Night
1 / 2	1 / 2	1 / 2	1 / 2 - 1 / 2

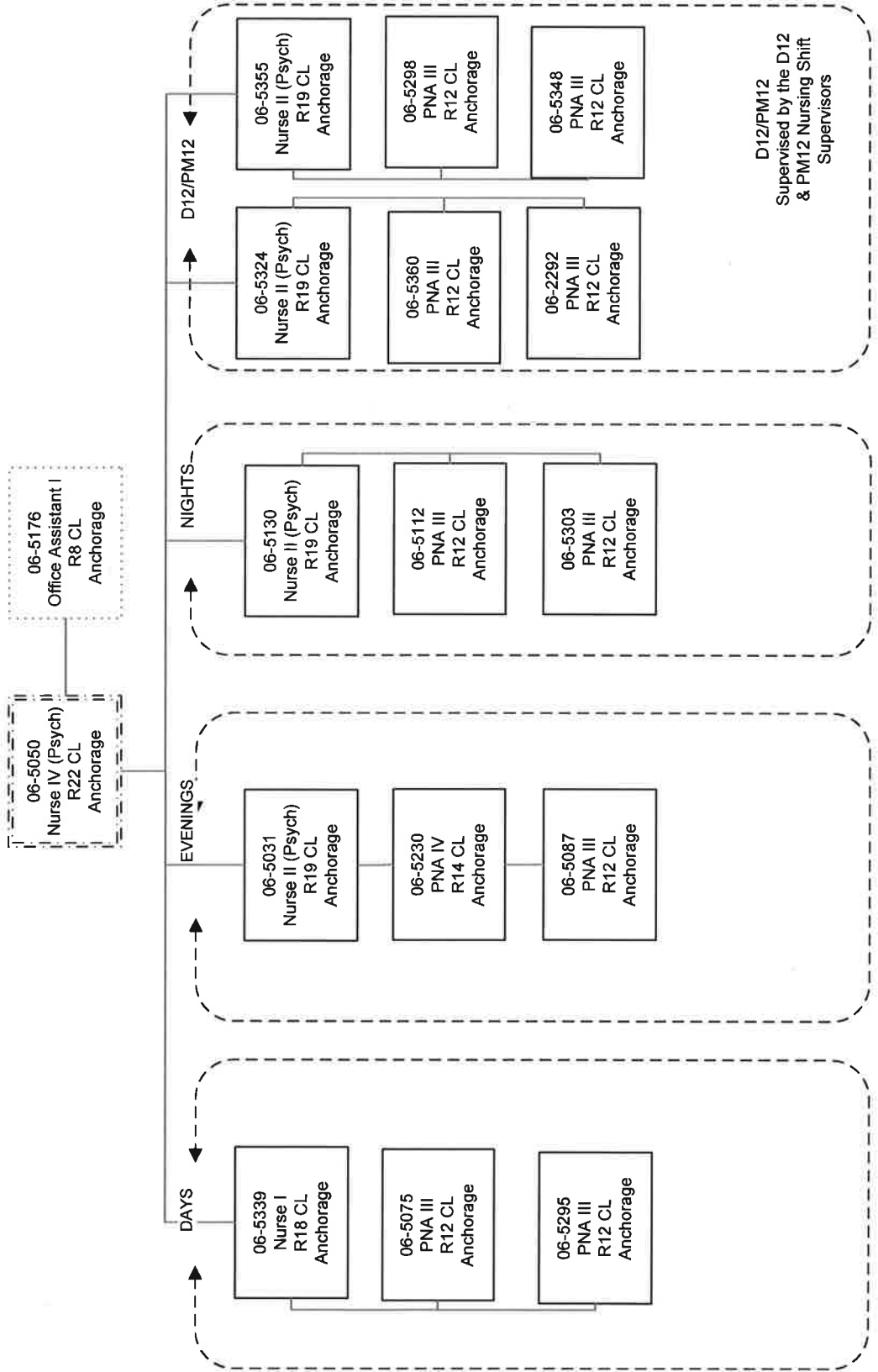
RN=5 / PNA=10



Core Floor Staffing Levels for RN / PNA:

Day	Evening	Night	Weekend Day/Night
1 / 2	1 / 2	1 / 2	1 / 2 - 1 / 2

RN=5 / PNA=10

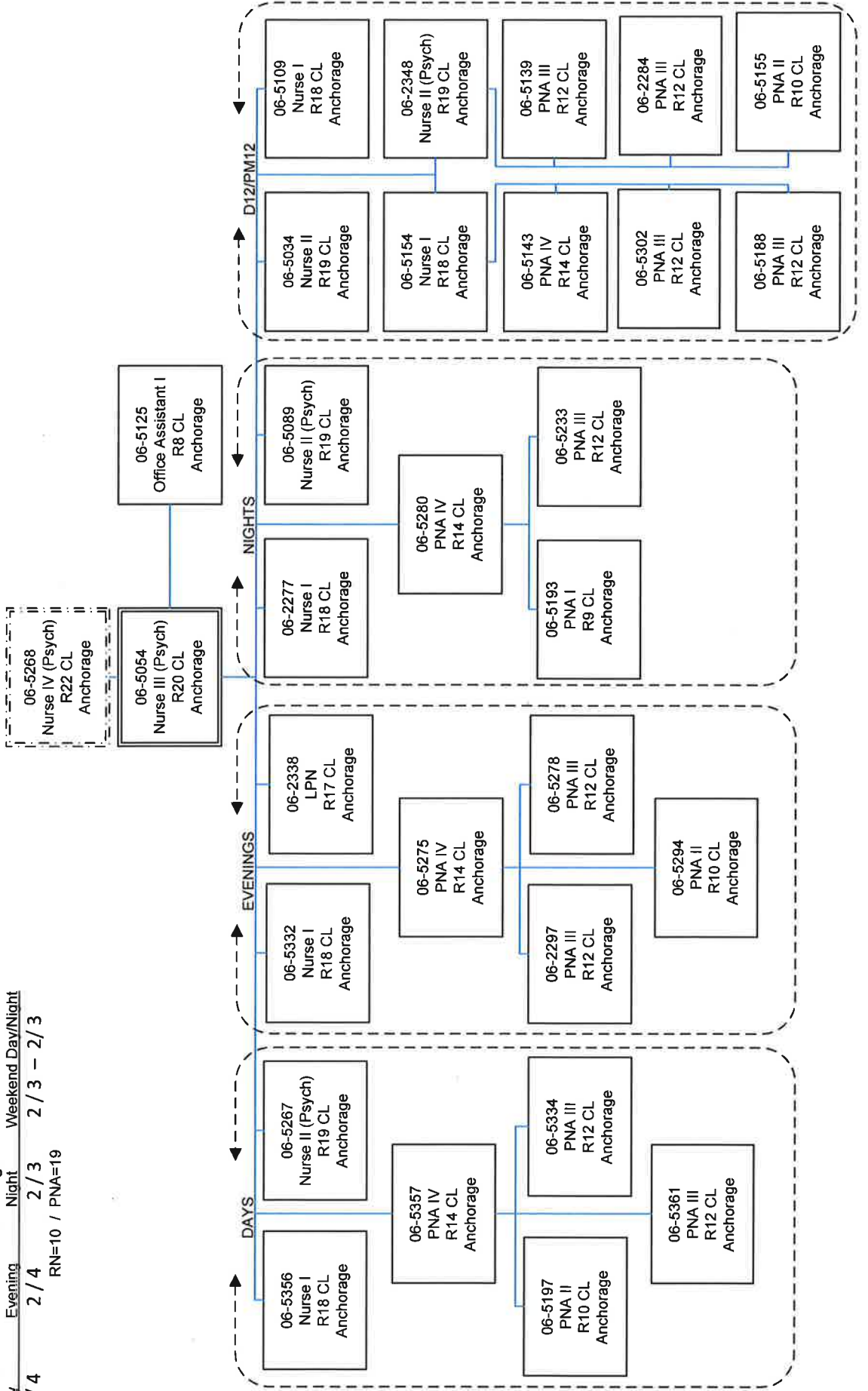


Core Floor Staffing Levels for RN / PNA:

Day	Evening	Night	Weekend Day/Night
2 / 4	2 / 4	2 / 3	2 / 4 - 2 / 4
	RN=10 / PNA=19		

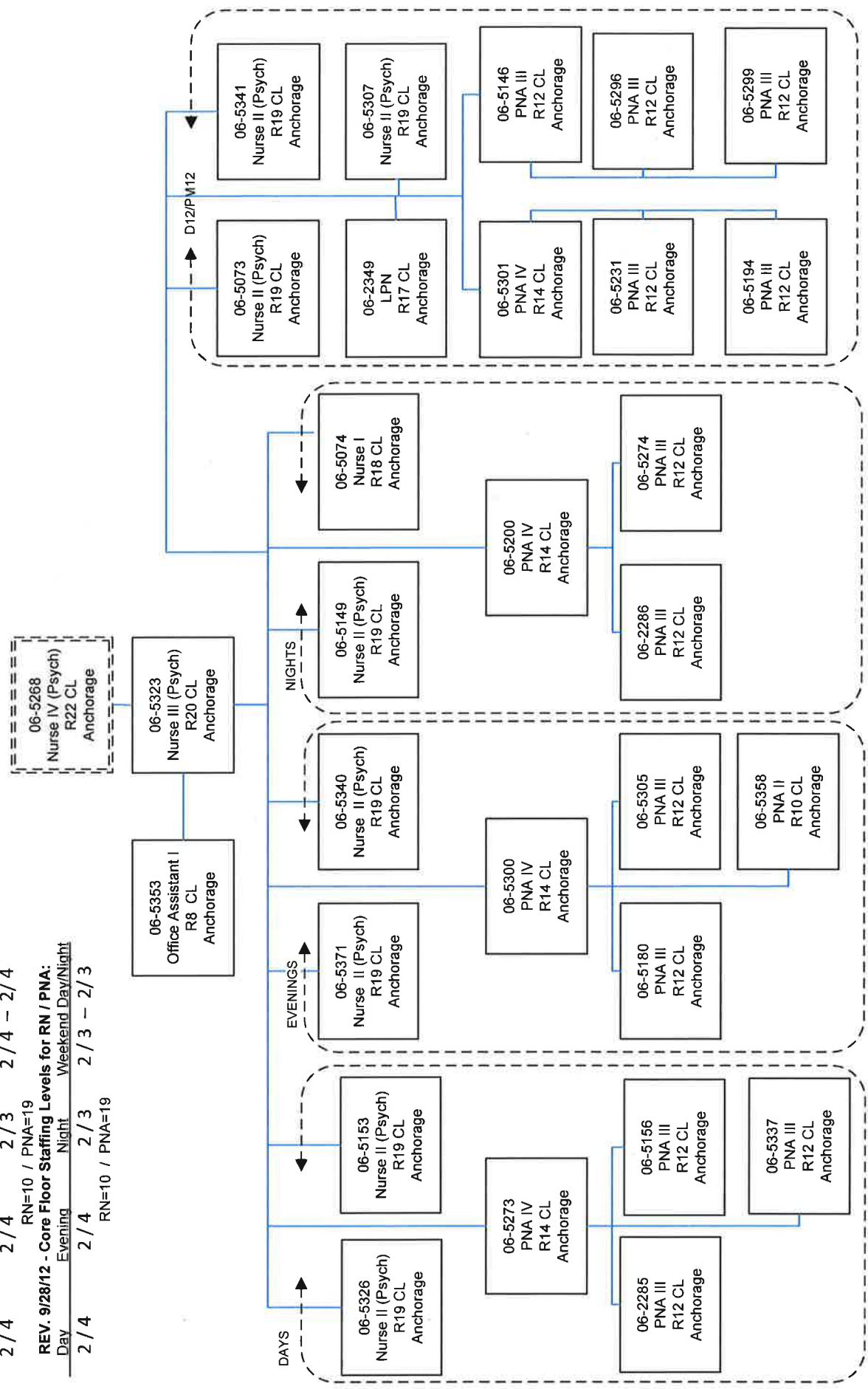
REV. 9/28/12 - Core Floor Staffing Levels for RN / PNA:

Day	Evening	Night	Weekend Day/Night
2 / 4	2 / 4	2 / 3	2 / 3 - 2 / 3
	RN=10 / PNA=19		



Core Floor Staffing Levels for RN / PNA:

Day	Evening	Night	Weekend	Day/Night
2 / 4	2 / 4	2 / 3	2 / 4	- 2 / 4
RN=10 / PNA=19				
REV. 9/28/12 - Core Floor Staffing Levels for RN / PNA:				
Day	Evening	Night	Weekend	Day/Night
2 / 4	2 / 4	2 / 3	2 / 3	- 2 / 3
RN=10 / PNA=19				



Department of Hlth. & Social Services
 Division of Behavioral Hlth.
 Alaska Psychiatric Institute
 FY15 Governor's Budget
 API Taku Unit 10/23/13

Core Floor Staffing Levels for RN / PNA:

Day	Evening	Night	Weekend Day/Night
1 / 2	1 / 2	1 / 2	1 / 2 - 1 / 2

RN=5 / PNA=10

